

Datahoods or Data-Driven Neighborhoods



Using GIS to better understand neighborhoods

Who am I?

Silas Toms

President, [Loki Intelligent Corporation](#)

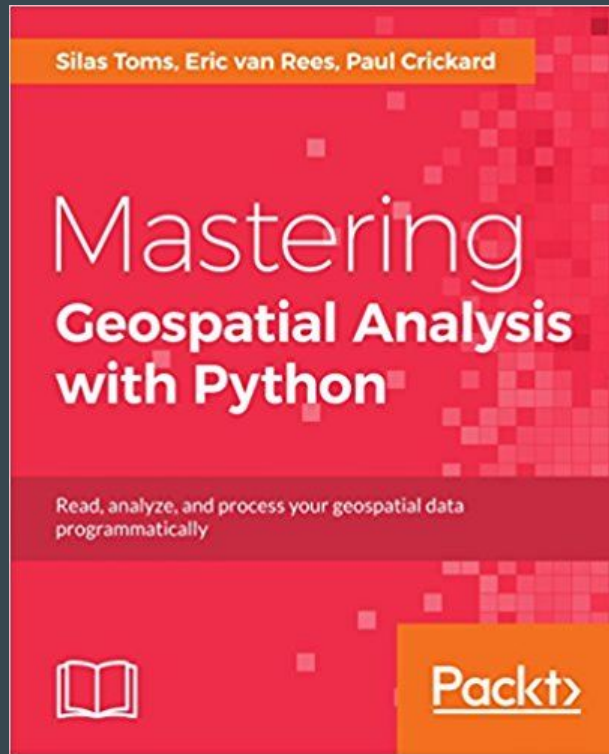
Author, [ArcPy and ArcGIS \(2 editions\)](#)

Co-Host of the [Mappyist Hour Podcast](#)

Newest book out this week: [Mastering Geospatial Analysis with Python](#)

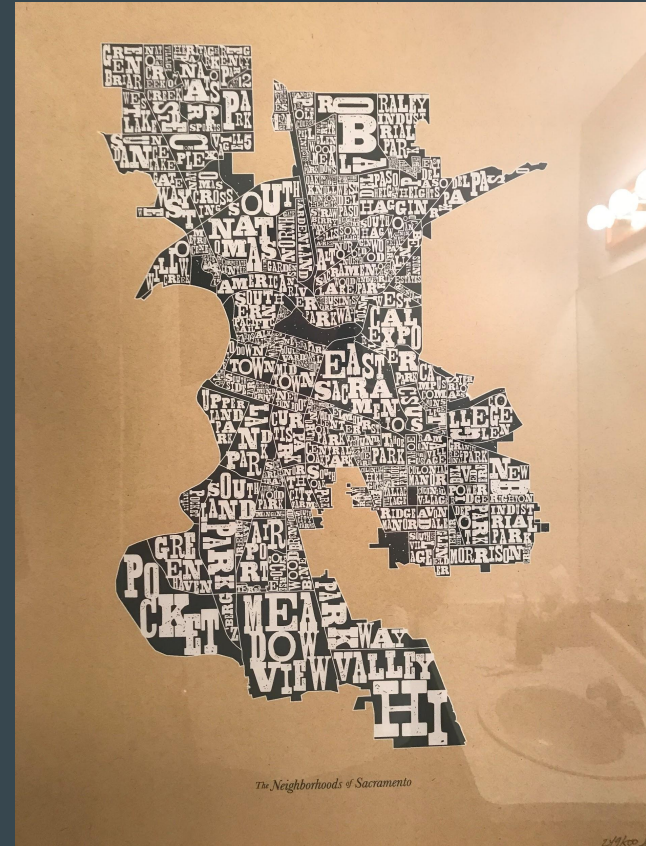
Geospatial Modules for Python 3:

Esri, CARTO, Mapbox, QGIS and much more



Today's topics

- What is a neighborhood?
- How to define them?
- How to watch them change through time?
- Is there a better way?
- Can we use data - publicly available, well-defined - to craft “data-driven” neighborhoods, and watch them change through time?
- What GIS tech can we use to do so?




Problem

- Neighborhoods are unofficial and loosely defined
- Neighborhoods change constantly
 - Individuals
 - Demographics
 - Businesses
 - Transportation
- Multiple names exist for the same geographies
 - Realtors vs “reality”
 - Is there a reality?
- Defining “gentrification”
- “Locals” and “visitors” - what is the extent of the neighborhood?

Definition of a neighborhood

- A neighborhood is the most personal geography
- NIMBY vs YIMBY
 - Emotional battles
- But “you can never go back”

neigh·bor·hood

/ˈnābərˌhōd/ 

noun

a district, especially one forming a community within a town or city.

"she lived in a wealthy neighborhood of Boston"

synonyms: [district](#), [area](#), [locality](#), [locale](#), [quarter](#), [community](#); [More](#)

- neighborly feeling or conduct.

"the importance of neighborhood to old people"

- the area surrounding a particular place, person, or object.

"he was reluctant to leave the neighborhood of Butte"

synonyms: [vicinity](#), [environs](#), [purlieus](#), [precincts](#), [vicinage](#)

"in the neighborhood of Greensboro"

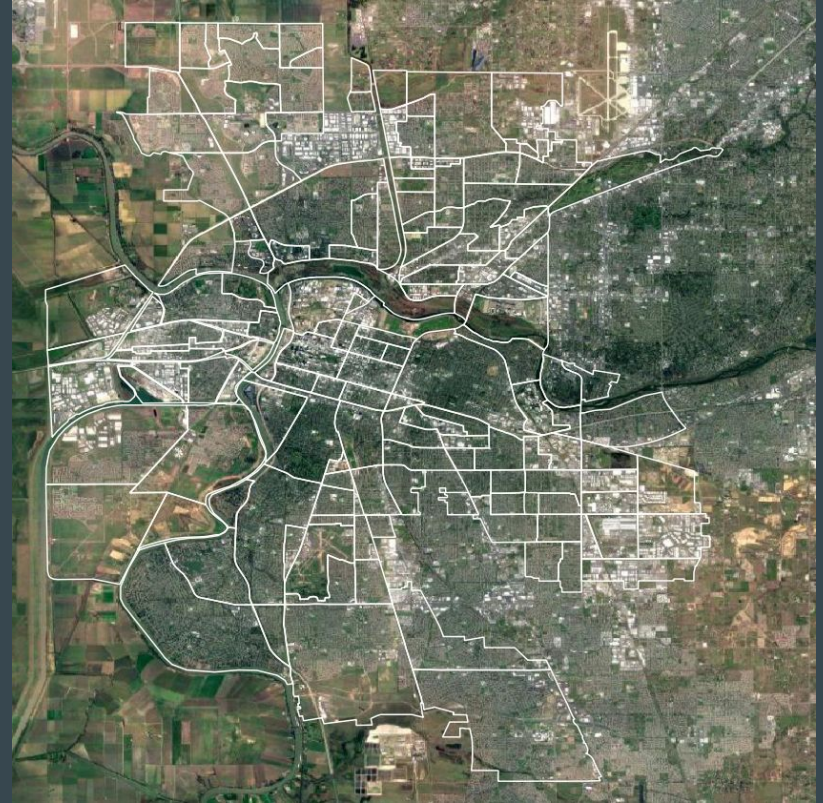
Top down or bottom up?

- Are neighborhoods defined by the government?
- Are they defined by the residents?
- Are they defined by the services and businesses they contain?
- How do we know what they offer to residents and visitors alike?



Introducing: Data-Driven Neighborhoods

- Concept: using GIS technology, social media, and government data to map and monitor change through time on a “neighborhood” scale
- Built around local businesses
- With APIs and ABCs, we can do this



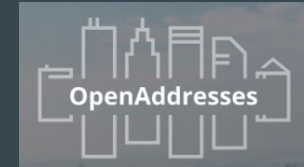
What kind of questions can it answer?

- What areas/hoods are receiving growth
- What areas are long established
- Who lives in the area, and who visits
- How is the hood changing through time
- How fluid are the 'boundaries'
- Leading indicator for fluctuations in home values
- Happiness indicators using text



Data sources available

- Open Street Map
- OpenAddresses
- Existing neighborhood shapefiles
- Census data at various scales
- Social Media
 - Location-based check-in data
- ABC: Alcohol Beverage Control data



How it can be implemented

- Map all alcohol licenses for a neighborhood, city, county or state
- Find clusters of businesses to identify neighborhood cores
- Use license types (markets/restaurants/clubs/cafes/wineries, etc) to understand the services available
- Use social media check-in comparisons (in the cluster vs other areas) to understand who is visiting vs where else they are visiting
- Use census data demographics in the cluster and in the other areas to understand who the core cluster serves
- Monitor it through time to get a clearer picture of change
- Create neighborhood definitions based on proximity, demographics and autocorrelation

ABC data is at the core

- Incredible well regulated
 - over 80 types of licenses
- Publicly available
 - Daily Reports
 - Weekly downloads
- All kinds of businesses are included
 - Markets
 - Restaurants
 - Cafes
- Includes dates
- Includes address data
 - It can be mapped!!!!

number character varying	description character varying
30	Temporary Retail Permit (Only in conjunction with a Person to Person transfer)
31	Special Daily License (Temporary Beer or Wine)
32	Daily Beer
33	Daily Wine
34	Daily Beer and Wine
37	Daily On-Sale General
20	Off-Sale Beer and Wine
21	Off-Sale General
85	Limited Off-Sale Retail Wine License
40	On-Sale Beer
41	On-Sale Beer and Wine for Bona Fide Public Eating Place
42	On-Sale Beer and Wine for Public Premises
43	On-Sale Beer and Wine for Train
44	On-Sale Beer for Fishing Party Boat
45	On-Sale Beer and Wine for Boat
46	On-Sale Beer and Wine for Airplane
47	On-Sale General for Bona Fide Public Eating Place
48	On-Sale General for Public Premises
49	On-Sale General for Seasonal Business
50	On-Sale General for Club
51	Club
52	Veterans' Club
53	On-Sale General for Train
54	On-Sale General for Boat
55	On-Sale General for Airplane
56	On-Sale General for Vessel of more than 1,000 tons burden
57	Special On-Sale General
58	Caterer's Permit
59	On-Sale Beer and Wine for Seasonal Business

Combination of sources and techniques

- Must be mapped very accurately
 - OpenAddresses
 - Geocoding
- Social media check-ins in the area vs other areas that users check-in
- Census data to understand demographics of both residents and visitors
 - Must be up to date
- Time series
- Clustering
- Spatial autocorrelation
 - Helps to infer about visitors that don't check in



Does alcohol data define neighborhoods?

- A proxy for local tastes
- Up to date
- Consistently maintained and available
- Changes through time are easy to see and understand
- Not perfect, but it's very good
- Combined with other data sources, gives a very clear picture



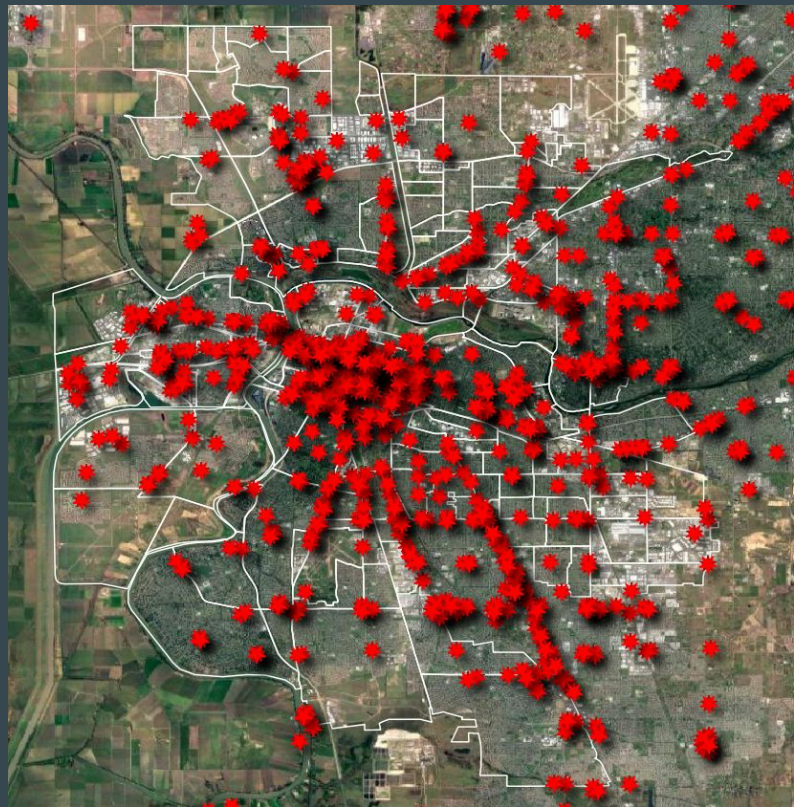
Technology stack I am using

- Web-based analysis tool
- Python at the core
- Flask Web Framework
 - Python-based
- SQLAlchemy and GeoAlchemy2
 - Database ORM
 - Spatial component
- PostGIS
 - Spatial database extension to PostgreSQL
- Twitter Python bindings
- Machine Learning/Statistics
 - Tensorflow



Next steps

- Finish all of California
- Add other states
- Add in dispensaries?
- Tipple.press
 - Will be up this month
- A “news” site
 - Built for analysis as well as news
- Other data sources & change indicators:
 - Home sales
 - Transportation changes
 - Voting records
- Make your own!



Questions?

Email: silas@loki.mobi

Twitter: [@loki_president](https://twitter.com/loki_president)

thanks for coming!